



CDP® 4666

Wear plates

- Offers with its complex and rich carbide structure the best protection against severe abrasion and erosion.
- Is the best solution for maintenance cost reduction especially where productivity is a key factor.
- Is also available with Castolin Eutectic XuperWave pattern to reduce even more wear rate.
- Is the industry preferred choice

Castolin Eutectic, your best partner to reduce maintenance costs

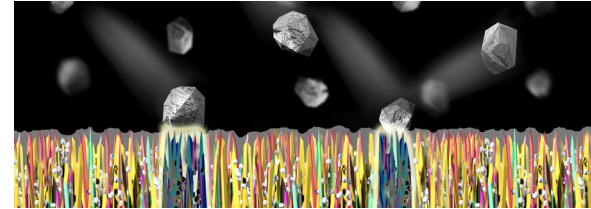
With more than 100 years experience in welding and wear protection, Castolin Eutectic is the manufacturer of the widest range of wear plates today on the market, in terms of base materials, sizes, coating alloys and welding processes adopted.

From simple Chromium Carbide rich overlays, applied in open arc, to sophisticated NiCrBSi powders added with Tungsten Carbides and fused in a vacuum furnace or by means of Plasma Transferred Arc, we have developed a wide choice of products.

CDP® 4666

CDP® 4666 is the High Load wearplate for extreme abrasion and erosion resistance. Its complex carbide structure contains a high density of hard particles.

The extremely hard boron and niobium particles are finely dispersed in between the chromium carbides, reducing their spacing and ensuring the best protection from abrasive and erosive media of finer size. Our exclusive Xuperwave weld bead pattern drastically reduces the wear rate, especially in applications exposed to high velocity fluxes. CDP® 4666 is the premium quality product to decrease maintenance costs.



Available versions

Dimensions: 1.500 x 3.000mm (1.220 x 2.740mm coated, 3,34 m²)

Base material: mild steel – other metals available on request

Type of wearfacing: Chromium carbide, Niobium carbide and Boron carbide rich alloy

Hardness of the weld clad surface: 62-65 HRC

Carbide content: > 50%

Max operating temperature: 450°C

Designation	Base material [mm]	Wearfacing [mm]
CDP® 4666 DP AND DXWs 0503	5	3
CDP® 4666 DP AND DXWs 0604	6	4
CDP® 4666 DP AND DXWs 0804	8	4
CDP® 4666 DP AND DXWs 0805	8	5
CDP® 4666 DP AND DXWs 1005	10	5
CDP® 4666 DP AND DXWs 1505	15	5

Available versions (other sizes available on request):
CDP® 4666 DP (straight weld bead pattern) or CDP® 4666 DXW (Xuperwave)

Coated on one side with a single layer of wearfacing alloy.

You deserve the best plates, we manufacture them.

The Castolin Eutectic manufacturing accuracy, the specific welding procedure and equipment promote a better orientation of hard phases within the alloy during solidification, ensuring an additional protection of the surface and a stronger bonding between carbides and matrix.

Always close to you

On field experience clearly shows that every application requires a tailor made solution, let our representatives advise you about the CDP® that fits the best your needs and suggest the best procedures for cutting, bending, joining and fixing wearplates.