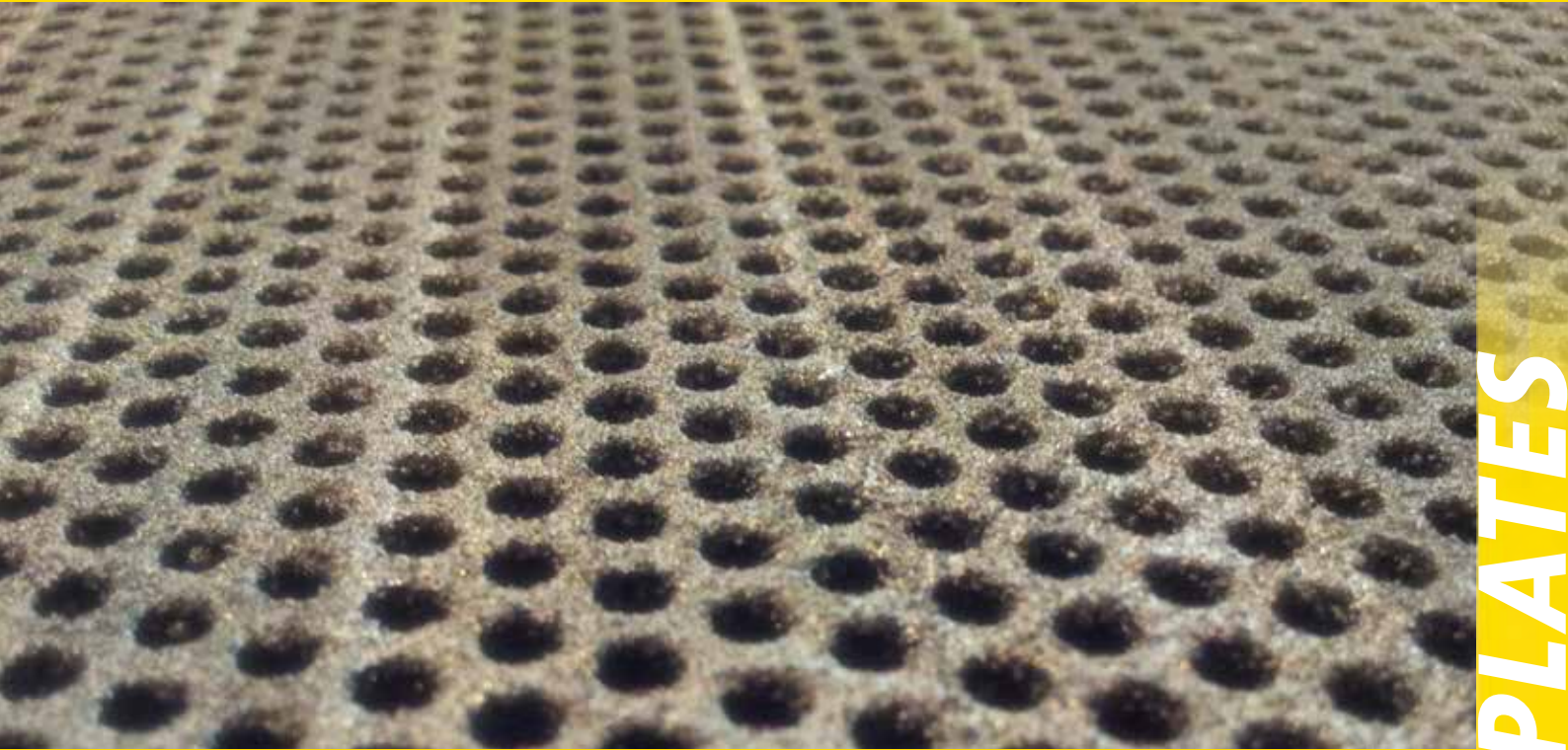


# LC8 Wear Resistant Sieves for Enhanced Service Life



WEAR PLATES



We offer a comprehensive range of Wear Resistant Sieves with round, square or oval apertures manufactured from 3mm thick or higher, perforated sheets. We also manufacture tailor made solutions according to specific customer requests.



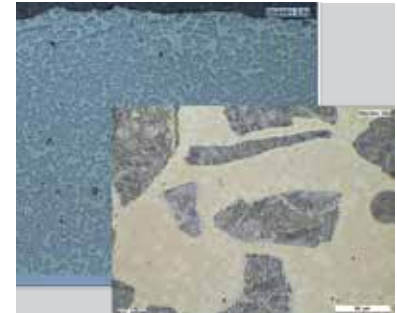
Our production technology uses a state-of-the-art, high power laser cladding installation. This system ensures highest quality wearfacing coatings of tungsten carbides dispersed in a nickel based matrix to protect standard perforated steel sheets with variable mesh sizes.



**Coating system:**

The ultra hard tungsten carbide phases which are homogeneously distributed within a self fluxing, tough nickel based alloy matrix, provide :

- Extreme wear resistance performance against abrasion and erosion up to 10 times higher than standard, monolithic heat treated steel alternatives.
- Withstands operating service temperatures up to 400°C. For even higher service temperature requirements, a diverse range of special alloy systems may be proposed to meet specific customer needs.



Cool Castolin Eutectic LaserClad™ Technology uses a focused laser beam to ensure low heat input welding conditions which ensures extremely effective, wear protective coatings on industrial parts.

Advantages over traditional, hardfacing techniques include :

- Very low dilution which maintains the intrinsic wear resistant properties intact.
- Minimal dissolution of wear resistant tungsten carbide phases into the matrix to improve protective coating performance
- Limited substrate deformation for easy installation and better service life
- Lowest degradation of base metal properties relative to other fusion cladding processes.

Our workshops are fully equipped with laser, plasma and wearfacing welding technologies, water cutting systems, rolling-bending equipment to manufacture tailor made sieve solutions.

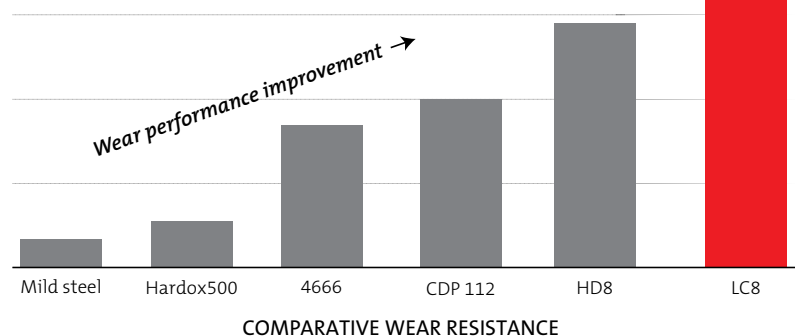


**Technical data:**

- Thickness 3+1 mm and higher
- Size: 2000/1000 x 1000 mm
- Maximal wear performance

**Manufacturing:**

- Castolin Austria, Wiener Neudorf
- Castolin South Korea, Incheon



**Your resource for protection, repair and joining solutions**

**Statement of Liability:** Due to variations inherent in specific applications, the technical information contained herein, including any information as to suggested product applications or results, is presented without representation or warranty, expressed or implied. Without limitation, there are no warranties of merchantability or of fitness for a particular purpose. Each process and application must be fully evaluated by the user in all respects, including suitability, compliance with applicable law and non-infringement of the rights of others, and Messer Eutectic Castolin and its affiliates shall have no liability in respect there-of.